

**Product Data – Turning Rolls****Preston-Eastin Model TDRA-20 HD, TIRA-20 HD****Capacity**

- Weight: 20,000 pounds driver, 20,000 pounds idler
- Turning: 60,000 pounds
- Tractive: 5,500 pounds
- Work piece diameter: 6 inches to 14 feet

**Frame**

- Material: Welded steel channel
- Precision: Jig-drilled roller mounting holes
- Adjustability: Six center distance settings
- Features: Adjustable roller base position
- Constant centerline option: Available

**Drive**

- Wheel speed: 1.9 to 57 inches per minute
- Motor: 1.5 HP variable speed DC
- Motor control: Solid-state with dynamic braking

**Drive train:**

- Gearboxes: Welded steel, worm drive
- Worm: Hardened steel
- Worm gear: 90,000 psi aluminum bronze
- Pillow blocks: Welded steel, tapered roller bearings
- Drive shaft: Tubular steel

**Wheels**

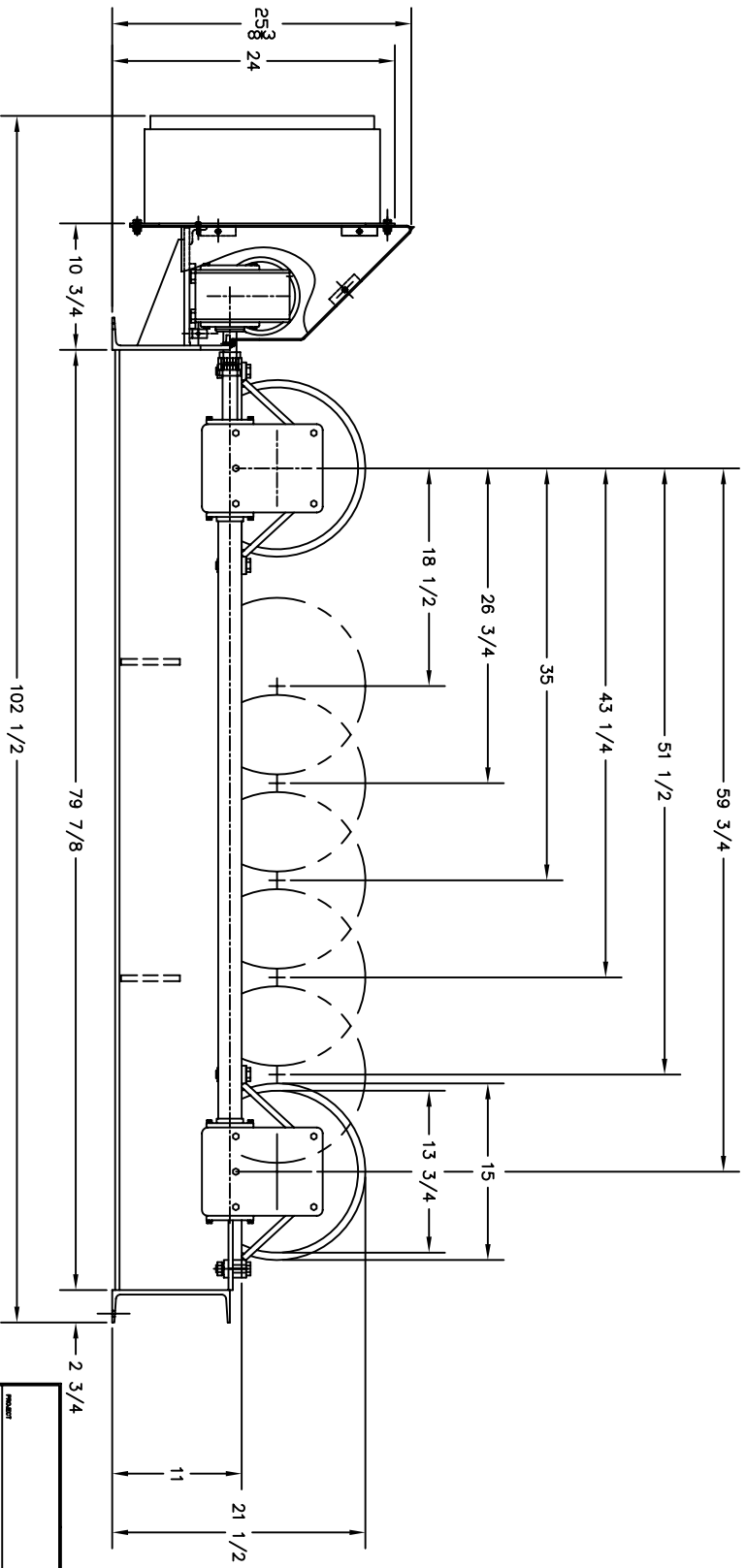
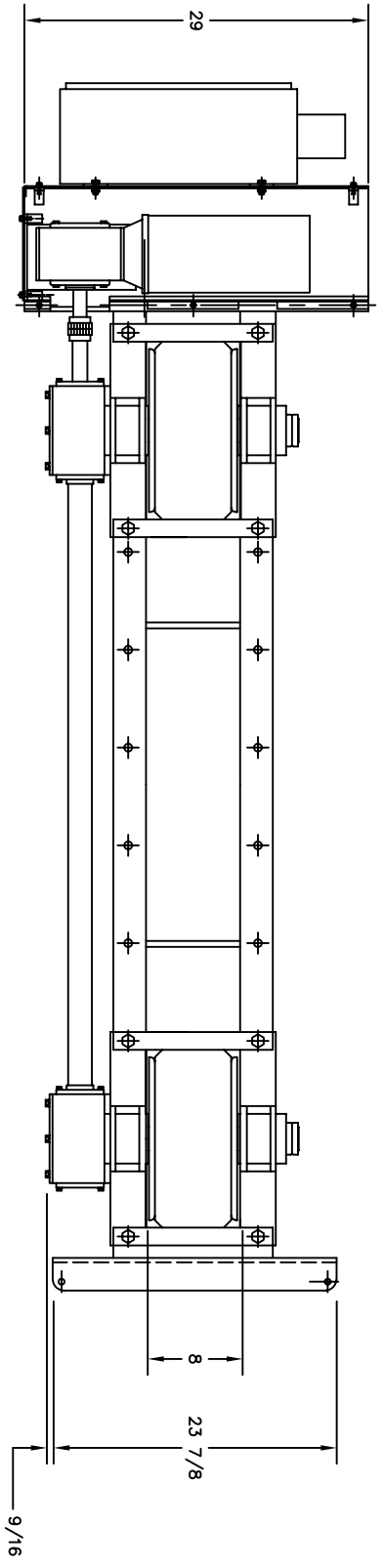
- Tires: 15" X 7" solid rubber
- Backup discs: 2 steel discs per axle
- Optional wheels: Steel, urethane or phenolic

**Control**

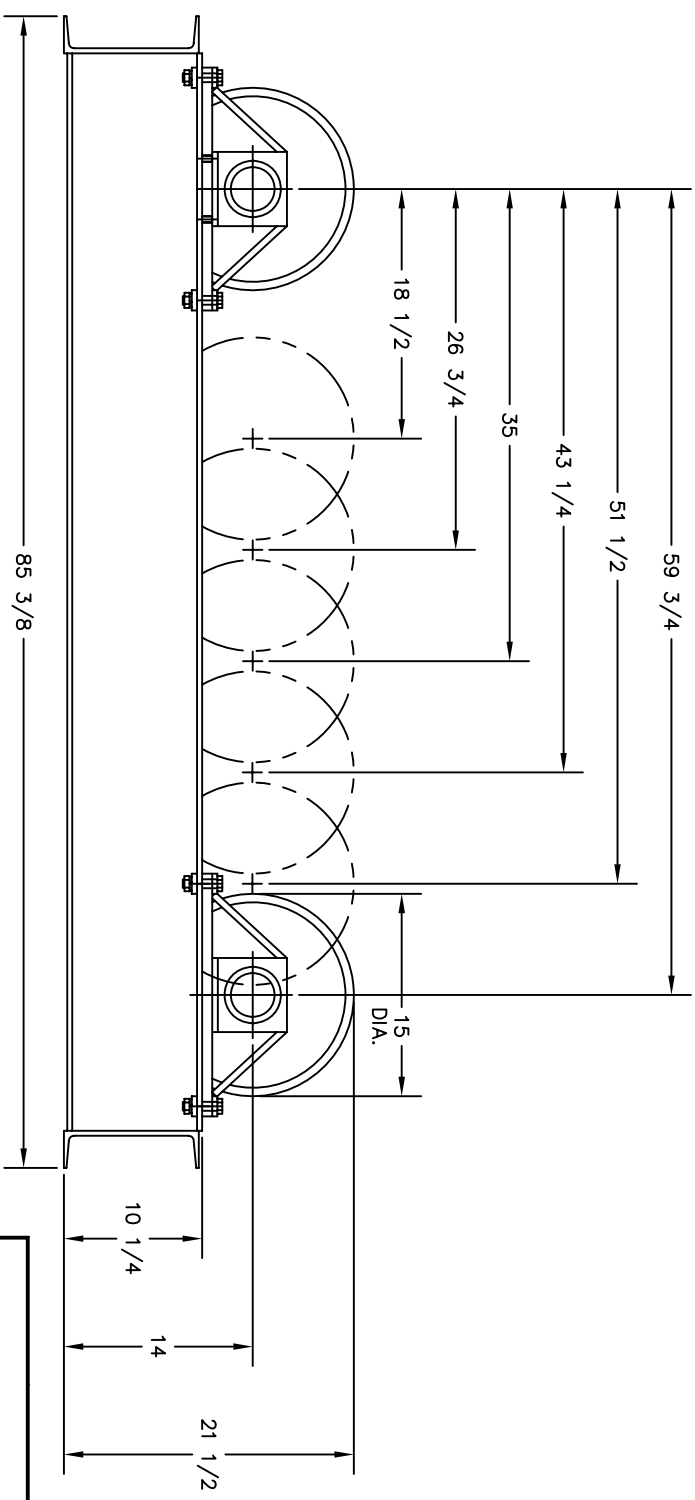
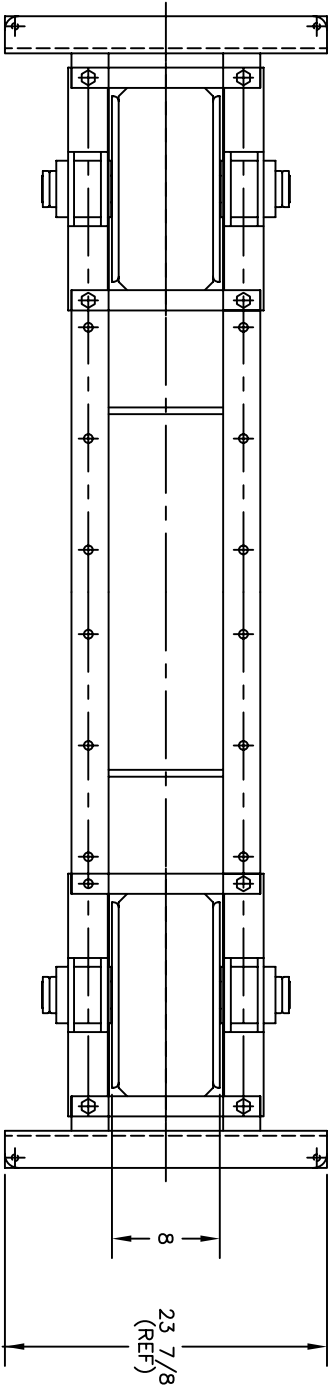
- Pendant: Remote pendant with 30-foot cable
- Optional cable lengths: Available
- Speed control: One-turn potentiometer
- Directional control: Three position selector switch
- Rapid traverse: Two position selector switch
- Power: 240/480V, single phase

**Weight**

- Driver: 1400 pounds
- Idler: 850 pounds



<b>PRESTON-EASTIN INC.</b> OKLAHOMA TULSA		<b>300003</b>	
MODEL GRANT DATE 1-2-90 DRAWN B.J.K. FILE 3-30-98	TITLE <b>TDR-20</b>	REV. NO. <b>1</b>	DATE <b>7/04</b>
DIMENSIONAL OUTLINE			
THIS DRAWING AND THE DESIGNS HEREIN ARE THE PROPERTY OF PRESTON-EASTIN INC. REPRODUCTION AND/OR USE WITHOUT WRITTEN PERMISSION IS PROHIBITED.			



<b>PRESTON-EASTON INC.</b> OKLAHOMA		<b>30110</b>	
PROJECT TULSA	TITLE TIRA-20	DATE 1-2-80	REV. 1 OF 1
DESIGNER GRANT	CHECKER B.J.K.	DATE 4-22-89	REV. 1 OF 1

THIS DRAWING AND THE DESIGNS HEREIN ARE THE PROPERTY OF PRESTON-EASTON INC. REPRODUCTION AND/OR USE WITHOUT WRITTEN PERMISSION IS PROHIBITED.